

# Nomad

Duke Pearson

Fm Ebm Dbm Bm E7 Am Gm Fm Ebm Ab7 Cm<sup>Δ</sup>7

§

Bbm<sup>Δ</sup>7 Abm<sup>Δ</sup>7 Gbm7

B13 Fm Ebm Dbm Bm E7 Am

1. Gm Fm Ebm Ab7 Cm<sup>Δ</sup>7

2. Am7

Am7

Gm7

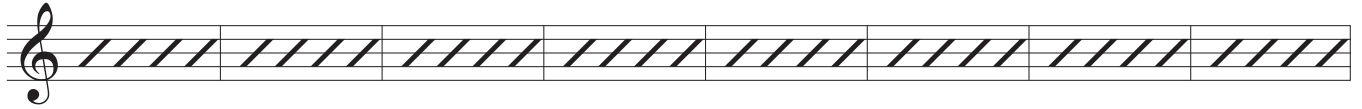
Gm7 To Coda

Nomad 2

Solos Cm Bbm Abm Gbm B7 Fm Ebm Dbm Bm



Am



Gm



After solos D.S. al coda

∅

